

**c.p. bourg**®

The Print Finishing Experts

**BSF SPECIFICATIONS**

**MEDIA SIZES**

Media width (cross track) from 7" to 14.33"  
(177.8 to 364 mm)

Media length (in track) from 8" to 22.5"  
(203.2 to 571.5 mm)

Note: max length is reduced to 20,5" 520 mm  
if using iGen cart kit and air table.

**MEDIA TYPES AND WEIGHTS**

Uncoated: 16 to 110 Lbs (60 to 300 GSM)

Coated: 24 to 130 Lbs (90 to 350 GSM)

**FEEDING STATIONS**

2 (upper and lower)

Upper station:

Capacity: 6" (152 mm)

Lower station:

Capacity: up to 19.7" (500 mm)

Stack central positioning by means of  
compressed air flow stack lift.

**ELECTRICAL RATINGS – POWER AND  
HEAT EMISSIONS**

120 / 230 VOLTS AC – single phase

+6%/-10% 50/60 HZ

9 A in 120 VAC or 4.5 A in 230 VAC

Power consumption in standby mode:

160W – 546 BTU/h – 200 VA

Power consumption in operation mode:

720 W – 2460 BTU/h – 980 VA

**FEED RATE**

In track Media dimension	To BMe	To BDFe	With BCMe
8.5" Letter Long Edge First	15000 sheets/hour	14000 sheets/hour	12000 sheets/hour
11" Letter Short Edge First	12000 sheets/hour	11800 sheets/hour	10000 sheets/hour
17" Ledger	10000 sheets/hour	9700 sheets/hour	7900 sheets/hour
450 mm SRA3	9500 sheets/hour	9300 sheets/hour	7500 sheets/hour

Cover: BSF, BCMe and BMe

Subject to change without notice

9133606 Rev. Sept. 2010

**BELGIUM**

C.P. Bourg S.A. N.V.  
*European Headquarters*  
22, rue des Technologies  
B-1340 Ottignies  
Belgique  
Tel.: +32 10 62 22 11  
Fax: +32 10 61 36 38  
Export fax: +32 10 61 63 55  
E-mail: [contactus@cpbourg.com](mailto:contactus@cpbourg.com)  
[www.cpbourg.com](http://www.cpbourg.com)

**FRANCE**

C.P. Bourg S.A.  
Parc d'Affaires Silic  
32, rue des Gémeaux  
BP 60410  
F-94573 Rungis  
France  
Tel.: +33 1 46 87 32 14  
Fax: +33 1 46 87 52 17  
E-mail: [cpbourg\\_france@cpbourg.com](mailto:cpbourg_france@cpbourg.com)  
[www.cpbourg.fr](http://www.cpbourg.fr)

**USA**

C.P. Bourg Inc  
*USA Headquarters*  
50 Samuel Barnet Blvd.  
New Bedford, MA 02745  
USA  
Tel.: +1 508 998 2171  
Fax: +1 508 998 2391  
E-mail: [cpbourgusa@cpbourg.com](mailto:cpbourgusa@cpbourg.com)

**GERMANY**

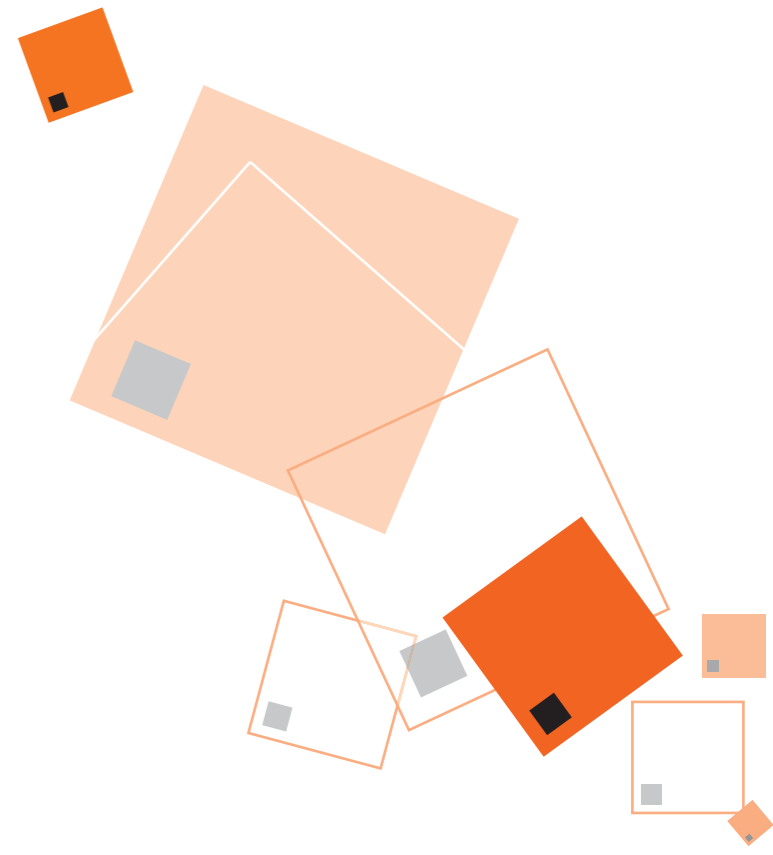
C.P. Bourg GmbH  
Schweizerstrasse 70/1  
D-72336 Balingen  
Germany  
Tel.: +49 7433 9981 680  
Fax: +49 7433 9981 686  
E-mail: [cpbourg\\_germany@cpbourg.com](mailto:cpbourg_germany@cpbourg.com)  
[www.cpbourg.de](http://www.cpbourg.de)

**LUXEMBOURG**

Ets C.P. Bourg Luxembourg S.A.  
14 Millewee, B.P. 85  
L-7201 Walferdange  
Luxembourg  
Tel.: +352 33 24 471  
Fax: +352 33 19 991  
E-mail: [cpbourgluxembourg@cpbourg.com](mailto:cpbourgluxembourg@cpbourg.com)  
[www.cpbourg.lu](http://www.cpbourg.lu)



**SHEET FEEDER**



# NO NEED TO SELECT BETWEEN ON-LINE AND OFF-LINE ANY MORE !

CP Bourg is presenting a Near-Line high volume sheet feeder that converts your stacks of pre-collated documents, coming from color or monochrome digital printers, or from offset presses, into stitched – fold – trimmed booklets, with a guaranteed set integrity. This new sheet feeder is the finishing solution for shops using digital and / or traditional printing processes. A paper feed system, extremely reliable, based on almost 50 years paper handling experience, together with the capability of transferring directly stacks from printer to feeder provide this solution with optimal productivity.

Together with the booklet making accessories from CP Bourg, this feeder offers a flexible, reliable and high performance finishing solution. Furthermore, as the full finishing line is controlled from a unique user interface, data used for setting up the different modules are checked automatically for consistency before starting operation. This unique feature is not only reducing setup time but as well minimizing opportunities for operator mistakes. Controller open architecture design enables connection to print flow servers and cost or productivity audit systems.

- Equipped with large suction belts, the paper feed device is able to reliably feed a very broad range of printed media. It also is capable of handling stacks that are not perfectly flat.



Suction belt system

In case of miss feed, the feeder is trying again to feed the sheet. In case of double feed, feeding process purges all sheets until the last one of the set and the entire faulted set is rejected. Double feed detection is using ultrasonic sensors, that do not require calibration.

- BSF feeder is supplied with OMR (Optical Mark Recognition) sensors to check for job integrity.
- BSF feeder can be delivered, as an option, with BCR (Bar Code Readers) to check for job integrity or other purposes.



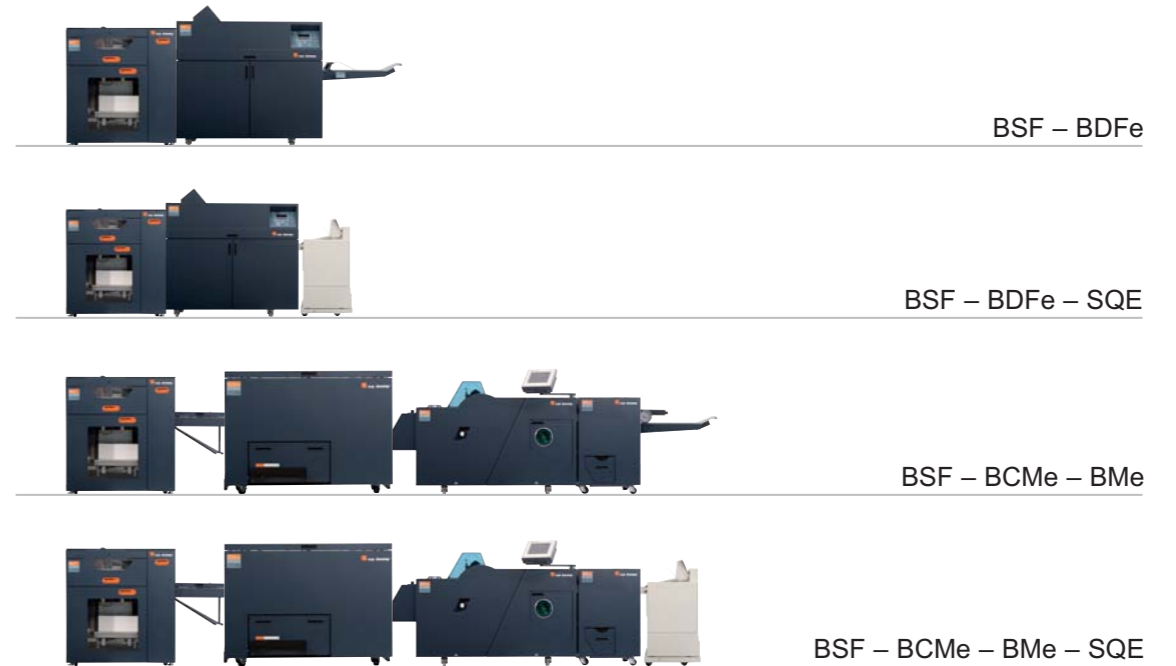
Reject tray  
Manual feed input



Stack loading with Xerox iGen3® or iGen4® carts



# POSSIBLE CONFIGURATIONS



## BSF with BCMe, BMe and SQE



The BSF will receive the carts, dollies or pallets supplied with the following digital printers:

- Xerox DocuTech® and Nuvera® – DS5000 and DS3500 stackers
- Kodak Digimaster® High Capacity Stackers (5000 sheets)

- Presses HP Indigo 3500, 5000, 5500 and 7000
- Furthermore, stacks created on stackers connected to Xerox iGen 3® and iGen 4® may easily be moved from iGen cart, equipped with optional adapter, to special tray inside BSF.

- Manual loading for stacks coming from not supported printers or offset presses is of course possible.
- Manual loading tray is supplied with all BSFs.