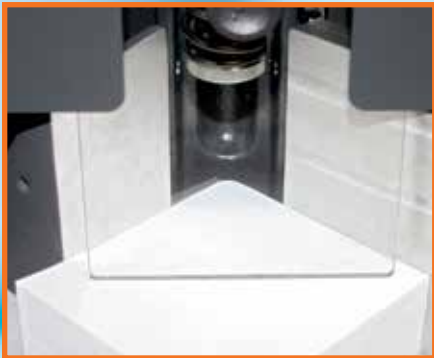




CORNERING SERIES

# SINGLE CORNERING MACHINES

PRODUCT OVERVIEW



# SINGLE CORNERING MACHINES

Finish your jobs with professional quality corners. The Challenge hydraulic powered Single Cornering Machine delivers up to ten times more cornering capacity than electric powered table-top models in the market. The SCM's powerful hydraulic system and robust knives easily handle difficult stocks such as index cards and coated materials. The shear cutting mechanism preserves knife sharpness and maintains high quality cuts. Designed and built in Michigan - USA, the Challenge SCM is a valuable machine for any print shop. Also available in a manual model for lower capacity requirements.

## FEATURES

- Handles any size sheet
- Gravity chip disposal with large waste bin
- 6 sizes of cornering knives to choose from

## HYDRAULIC MODEL

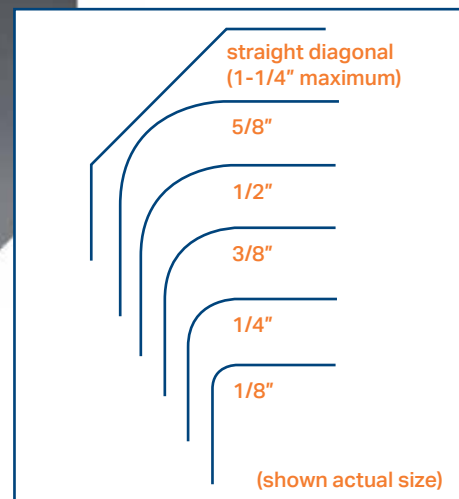
- 4" / 10 cm stack height
- Hydraulic powered cutting
- Plexiglass safety shield
- Energy saving motor turns off between cycles

## MANUAL MODEL

- 2" / 5 cm stack height
- Foot activated cutting



manual model



## SPECIFICATIONS

- Available corner sizes: 1/8", 1/4", 3/8", 1/2", 5/8", and straight\*  
3 mm, 6 mm, 10 mm, 13 mm, 16 mm,  
\*(1-1/4"/ 32 mm max., diagonal cut)
- Table depth: 24"/ 61 cm
- Table width: 20-1/4"/ 51.5 cm
- Table height: 36"/ 91 cm
- Overall height: 52"/ 132 cm
- Floor space requirement: 24"x 20-1/4"/ 61 x 51.5 cm
- Net weight: 190 lbs/ 86 kg
- Shipping weight (approximate): 265 lbs/ 120 kg

## ELECTRICAL CE

- Standard motor: 1/2 HP., 60 Hz, AC, 115 volts/ 13.5 Amps
- Service size: 20 Amps
- Optional motor: 230 Volts, 50 Hz, 7 Amps

Note: NEMA 5-20R receptacle required for 20 Amp service



6125 Norton Center Drive, Norton Shores, Michigan 49441

231-799-8484

[www.challengemachinery.com](http://www.challengemachinery.com)

Challenge reserves the right to make changes to any products or specifications without notice and without incurring responsibility for existing units.

PROFESSIONAL OFFICES COPY CENTERS IN-PLANT PRINTERS ON-DEMAND DIGITAL PRINT PROVIDERS

ADV018/0918/1000/GPC