

# PLASTI 350 EVO

## FLEXIBLE AND MODULAR FOR HEAVY DUTY USE

Reel laminator with hot roller to be used for single side lamination jobs. Perfectly flat lamination is granted by adjustable **anti curling device**. The combination of 75mm steel lamination roller, powerful mechanical pressure and **contact-less temperature sensor** reading the actual laminating temperature on top of roller's surface grants incredible bonding even at maximum speed of 7mt/min. Teflon coating of laminating roller will make regular cleaning operations fast and simple. Sheets are fed manually but an **optional automatic feeder can be retro-fit on the machine**. Automatic overlapping and sheet separation make the whole process fast and smooth.

The machine is controlled by **MSC® Interface** which means ease of use and reliability provided by European quality components on this 100% made in Italy machine. **Profit calculation** is made easier with MSC Interface thanks to the actual **film consumption** monitoring for each single laminating job.

**Optional 3000mt reel holder** will let you save on laminating film taking advantage of lower price per sqm on longer rolls.

Want to offer your customer some stunning foiling effects on their printed materials? Upgrade your PLASTI 350 EVO to the **optional rewinding unit for foil application**.



**AUTOMATIC OVERLAP**

**AUTOMATIC SEPARATION**

**7 mt/min**

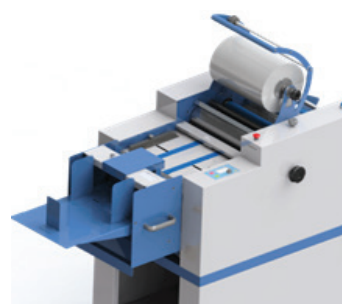
**OPTIONAL RETRO-FIT AUTO FEEDER**

**MSC® Interface**

**MADE IN ITALY**

**Optionals:**  
3000mt film kit  
Foiling kit

### OPTIONAL RETRO-FIT AUTOMATIC FEEDER

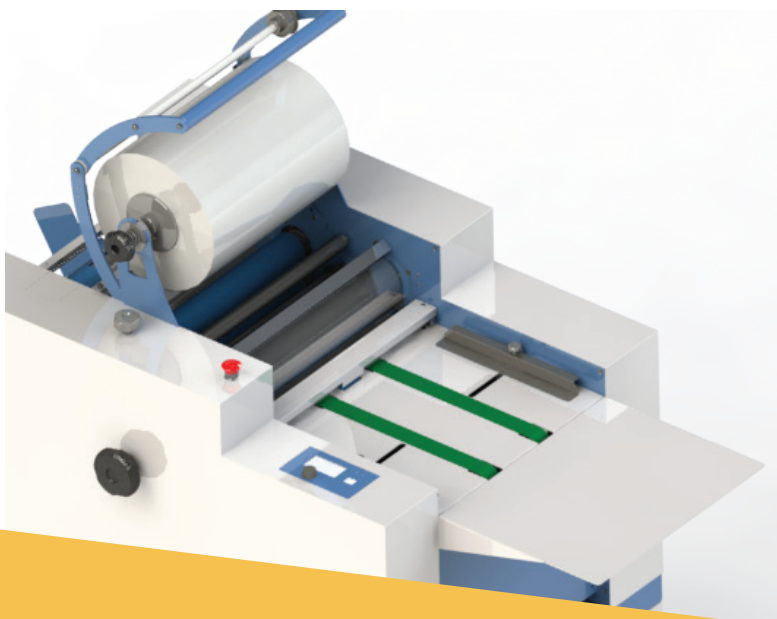


Optional high pile suction feeder handles paper up to 400gsm weight. Continuous lamination makes PLASTI 350 EVO a fully automatic machine. Connect and disconnect the feeder quickly upon job needs.

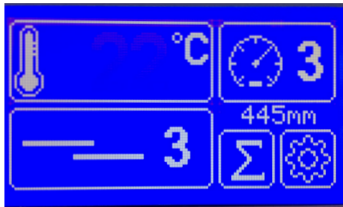
### MANUAL OR AUTOMATIC FEEDING ?

No need to make the choice, PLASTI 350 EVO grows with your business and can be **upgraded to a high pile fully automatic feeding machine** when your work flow and volumes will demand for it.

Nevertheless, from time to time hand feeding may still be the better option. When very short runs or irregular and complicate paper makes no sense spending time on automatic feeder adjustment, just detach the feeder from the laminator and feed the sheets by hand quickly.

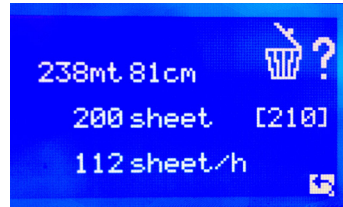


### ONE TOUCH CONTROL



Fast set-up and complete control through one single knob and a very intuitive display.

### PROFIT CALCULATION



Find out how much film was used for each single job including test and wasted sheets from the very begin of each job.

### AUTOMATIC OVERLAP



Accurate automatic overlap. Just keep on feeding the sheets and the machine will take of overlap on a continuous lamination process.

### OPTIONAL FOILING



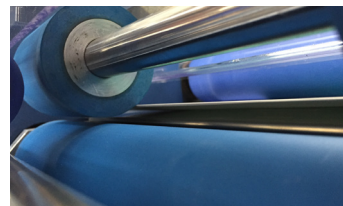
Optional rewinding shaft can be installat (retro-fit) for foiling/sleeking jobs.

### OPTIONAL 3000mt KIT



Save money on lamination costs taking advantage of the chance to install 3000mt roll on PLASTI 350 EVO.

### AUTOMATIC BURSTER



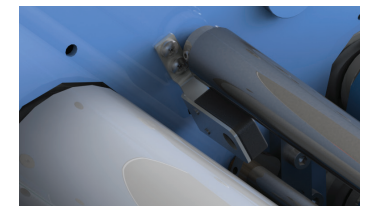
Automatic sheet separation of OPP single side laminated sheets. Set the lenght of paper and let the machine take care of it.

### AUTO FEEDER OPTION



Plug-in the optional feeder in case of high volumes or remove it in case of particularly difficult materials to be fed.

### CONTACTLESS SENSOR



Grants accurate temperature reading on top laminating roller for precise temperature setting

### TECHNICAL SPECIFICATIONS:

Maximum sheet width (mm)	350
Maximum lamination film width (mm)	340
Maximum sheet length (mm)	999
Minimum sheet length (mm)	200
Sheet separation	AUTOMATIC
Maximum speed (mt/min)	7 MT/MIN *
Laminating rollers pressure	MECHANIC
Anti-curling bar for single side lamination	YES
Paper weight	120 - 500 gsm
Control system	MSC® Interface
Maximum temperature (°C)	170
Power consumption - Requirement	900W - 230V 50/60 Hz
Weight (kg)	150

\* Speed and temperature combination determine lamination quality. For good film adhesion actual speed may be reduced accordingly to printed material, lamination film and temperature.