

## HM PERFECT BINDER - LEGA 420

### PROFESSIONAL SEMI-AUTOMATIC HOT MELT PERFECT BINDER

Hot melt perfect binder for high productivity operations.

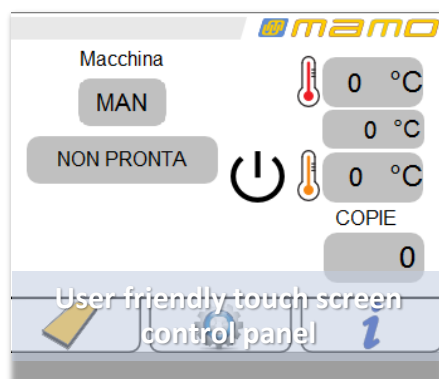
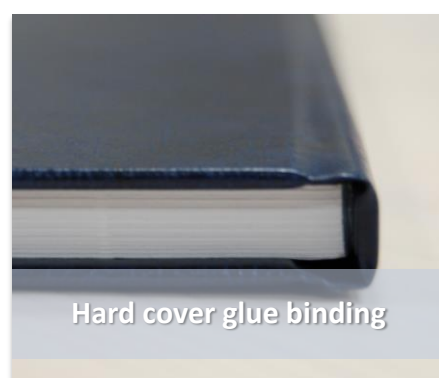
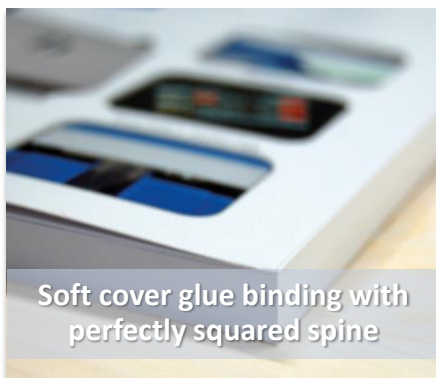
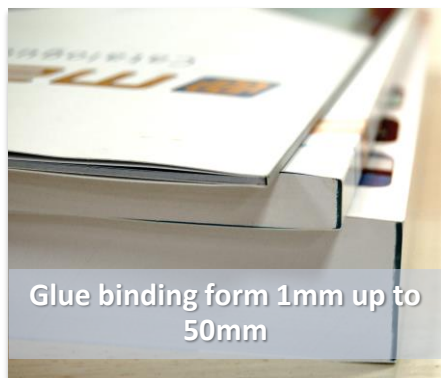
Can be used for **soft covers** or **hard covers** glue binding from a minimum thickness of 1mm to a maximum of 50mm.

A **perfectly squared spine** is always assured regardless the thickness of the book thanks to the powerful and micro adjustable cover clamp.

No pre-crease is needed on covers as the powerful clamp will provide a nice and flat spine especially on laminated covers.

The machine is equipped with **notching tool and milling disk** to be set through the **intuitive touch screen** control panel depending on the paper type.

**European technology** turn LEGA 420 into the most reliable and hard working partner for your binding needs!

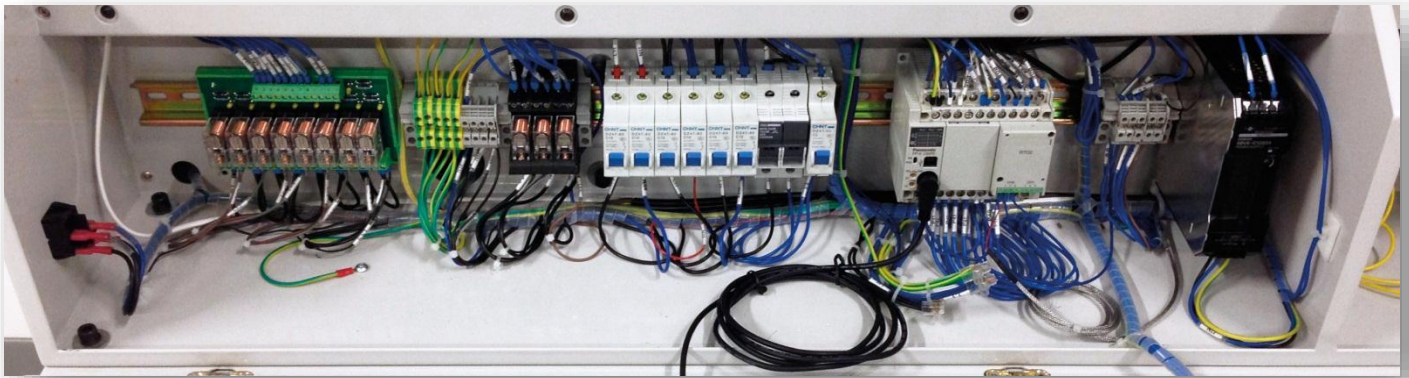


Visit our web site: [www.mamosrl.com](http://www.mamosrl.com)

Advanced PLC and made in Italy software, installed on LEGA 420 allow any kind of adjustment on each step of the production process through a user-friendly touch screen display

A powerful vacuum will reduce fume and dust making working place healthier and life of the machine longer!

**European technology makes LEGA 420 into the most reliable and hard working partner for your binding needs**



## TECHNICAL SPECIFICATIONS

- ✓ Max book length: mm 420
  - ✓ Max book thickness: mm 50 (500 sheets 80gsm)
  - ✓ Min book thickness: mm 1 (10 sheets 80gsm)
  - ✓ Production: up to 180 books per hour
  - ✓ Electric book clamp closure with adjustable closing time and pressure
  - ✓ Notching and milling available
  - ✓ Soft cover thickness: 70 to 400gsm
  - ✓ Hard cover thickness: 2mm
  - ✓ Glue Adjustment System
  - ✓ Fume and chip vacuum included
  - ✓ Power requirements: 230v - 50/60Hz
  - ✓ Power consumption: 1700W
- Dimensions: mm 1300x700x920



Visit our web site: [www.mamosrl.com](http://www.mamosrl.com)